

CUNY Virtual Desktop: Mac Log In/Log Off

IMPORTANT:

1. You should frequently save your data while using the CUNY Virtual Desktop (No data is saved in this environment). Any data that is not saved before you log off or are disconnected will be lost. You must save your data to your **local device, USB device or OneDrive** to avoid permanent loss of data.
2. You may work continuously within the CUNY Virtual Desktop for up to 8 hours. Please note, sessions inactive for more than 20 minutes will automatically log off.
3. Use your CUNYfirst ID followed by “@login.cuny.edu”, and your CUNYfirst password to log in to the CUNY Virtual Desktop.

Note: “Local Device” is your computer, tablet or smartphone from which you are accessing the CUNY Virtual Desktop.

The CUNY Virtual Desktop provides access to course software remotely. To Log in/Log off, please follow the instructions below:

1. Refer to the CUNY Virtual Desktop website, <http://cuny.edu/virtualdesktop> and click the desktop application you would like to use (e.g., “Maplesoft”):



CUNY CLOUD virtual desktop
Remotely Access Your Course Software Anytime! Anywhere!

VIRTUAL DESKTOP APPLICATIONS

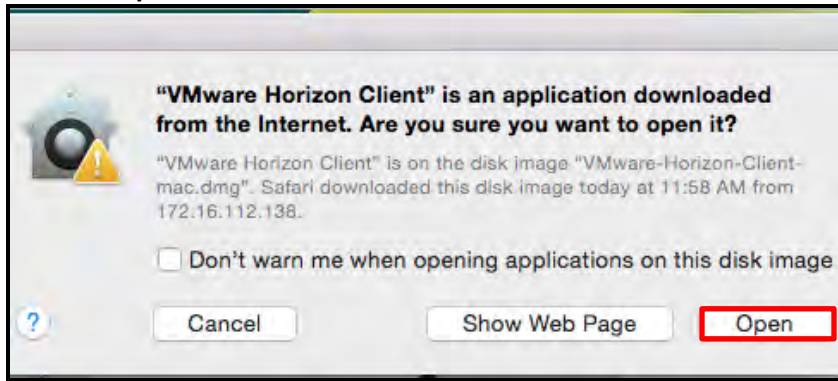
| | | | |
|--|--|---|---|
|  SPSS Ver. 22 |  SAS Ver. 9.4 |  Mathematica Ver. 10.2 |  Maplesoft Ver. 2015 |
|--|--|---|---|

Access using your CUNYfirst username followed by @login.cuny.edu, and your CUNYfirst password.

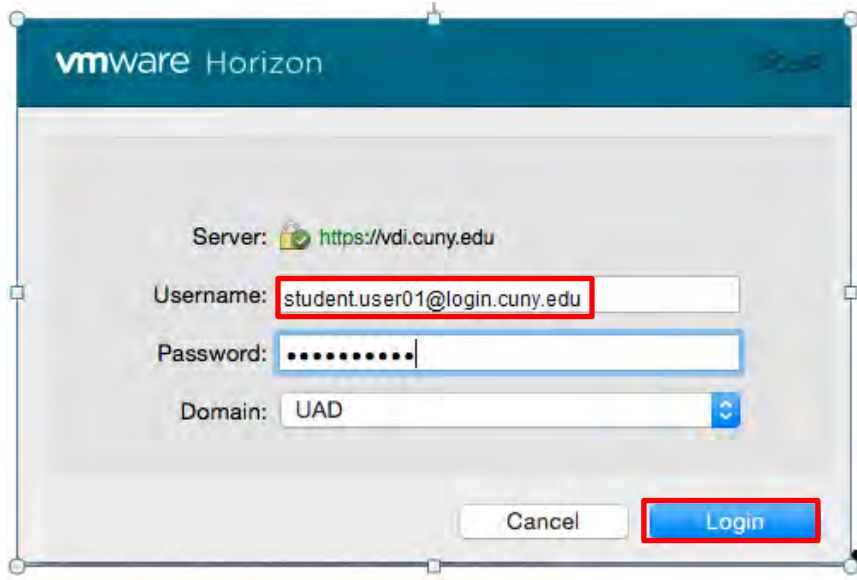
TO USE THE CUNY VIRTUAL DESKTOP:

1. Install it onto your computer, tablet or smartphone.
2. Access your applications by clicking on one of the icons above.
3. Log in using your CUNYfirst username followed by @login.cuny.edu, and your CUNYfirst password.
4. Save your data to a flash drive or local drive. Be sure to save your data before exiting the CUNY Virtual Desktop or your work will be lost. Print to any printer connected to your local device.
5. For additional help, please see the [FAQ's](#), [installation guide](#), or call your local campus service desk.

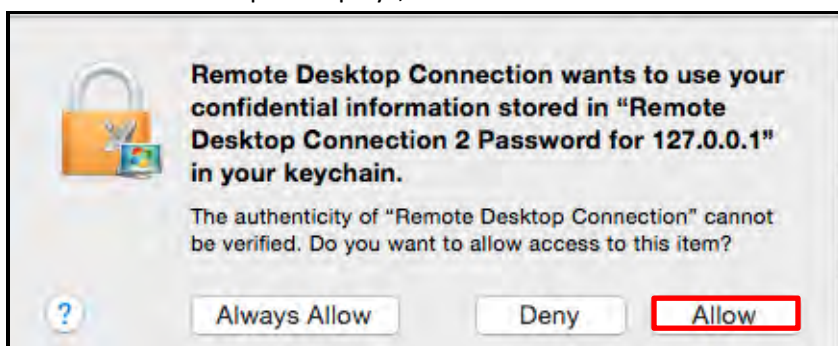
2. Click **Open**:



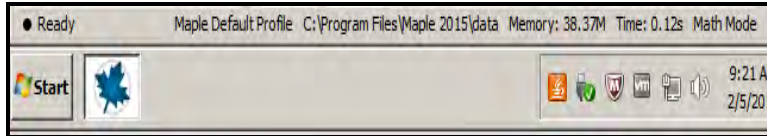
3. As in the example below, enter your CUNYfirst ID followed by **@login.cuny.edu**, enter your CUNYfirst password then click **Login**:



4. "Remote Desktop..." displays, click **Allow**:



Note: When the desktop loads, the CUNY virtual environment displays and is ready for use.



5. **Important:** When your virtual session is complete (and work saved locally or to a USB device) you must click **Start**, click the **Log off arrow**, then click **Disconnect**.

