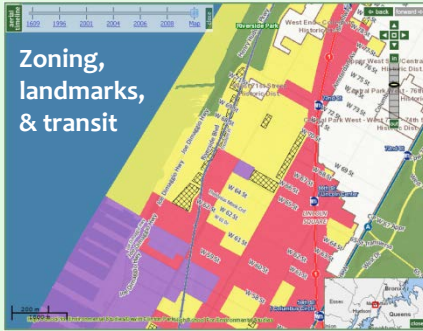


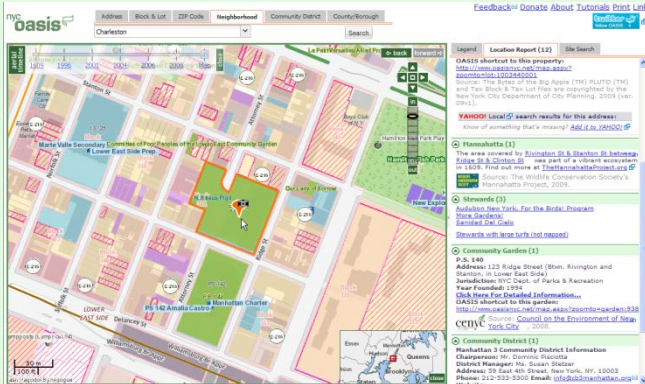
AN ONLINE OASIS FOR NEW YORK

The Open Accessible Space Information System at www.OASISnyc.net

A richly-layered interactive map of open space data (parks, gardens, wetlands, etc), land use maps, schools, housing, transit, Census maps, environmental hazards, and more.

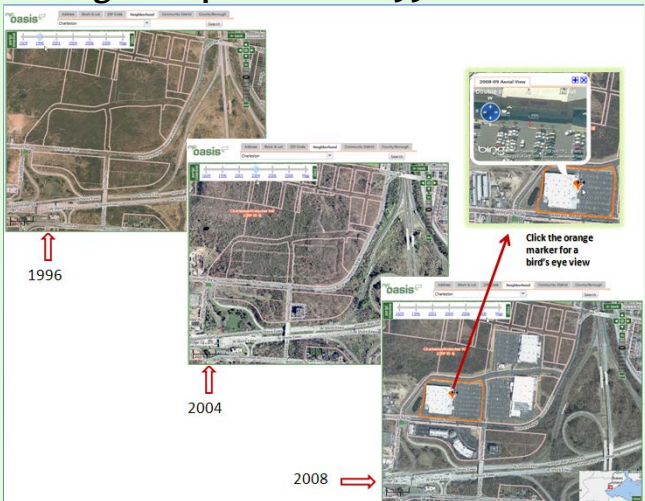


Zoom to a property, access detailed parcel info, & visualize the site in its neighborhood context.

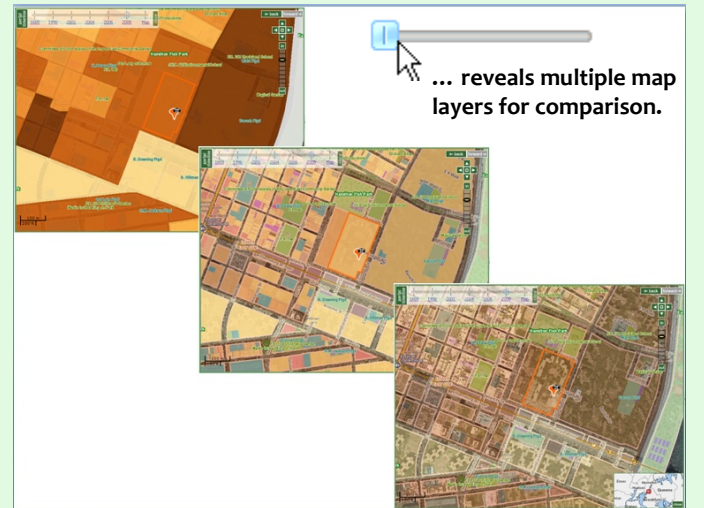


The OASIS website provides the richest source of community maps for New York City – free and all in one place. It helps nonprofits, community groups, educators, students, public agencies, and local businesses develop a better understanding of their environment with interactive maps of open spaces, property information, transportation networks, and more. It provides a platform to easily display your mapped data in relation to a wealth of other features. Key partnerships are in place with Mannahatta, Forest Service, EPA, Army Corps of Engineers, and GrowNYC. Partner with us @ oasisnyc@gc.cuny.edu !

Reveal neighborhood change by seamlessly viewing aerial photos from 1996 to 2008.



The dynamic transparency slider ...



Developed by the CUNY Mapping Service at the Center for Urban Research, CUNY Graduate Center, on behalf of the OASIS Steering Committee.

For more information, visit:
www.OASISnyc.net
www.urbanresearch.org

