

**THEY'LL
NEVER
TELL
NEW YORK
TO
DROP DEAD!**



VOTE CARTER-MONDALE NOV. 2

A VOTE FOR CARTER-MONDALE IS A VOTE FOR NEW YORK

If you live in New York, there *is* a difference . . . a real difference . . . between the candidates for President. Jerry Ford told us to "drop dead." In just a year and a half he vetoed programs for emergency jobs (twice), housing, education, health, day care . . . even lunches for school children.

Jimmy Carter has a specific program for cities like ours. Here are its key points.

- **Jobs:** Goal of full employment through private industry and public works programs
- **Welfare Reform:** U.S. and State assumption of costs
- **Mass Transportation:** Diversion of highway dollars
- **Housing:** Neighborhood rehabilitation and more low-income units
- **Revenue Sharing:** Direct unrestricted aid to cities

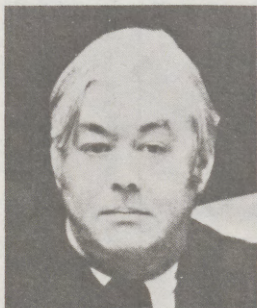
Remember, too, that the power of the Presidency is the power of appointment . . . from Supreme Court Justices (Nixon-Ford put five new ones on the bench) to Cabinet Officers to the heads of the Federal agencies. Carter's appointments will be pledged to the people, not the special interests.

Some other ways in which a Carter-Mondale Administration would be different

- Commitment to National Health Insurance
- Support for ERA and strict enforcement of Women's Rights
- Elimination of tax loopholes for corporations and rich individuals
- Ban on covert CIA activities
- Absolute guarantee of Israel's security
- Substantial reduction in military budget
- Support of majority rule in *all* African countries.

THE CARTER-MONDALE TICKET

**U.S. Senate
Daniel P. Moynihan**

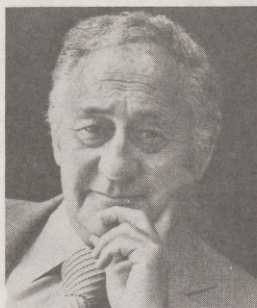


A Senator should fight for his State, and he should know how to carry that fight effectively to Washington. Pat Moynihan knows how to fight; he grew up in Hell's Kitchen. And he fought for us effectively and with honor 'cross town at the UN some forty years later.

Pat Moynihan knows Washington, and he knows how to make Washington work for our State and city. His programs of welfare reform, SSI, and general revenue sharing are proof of that.

He spoke up for America—and he'll speak up for New York.

**Surrogate
Samuel A. Spiegel**



Currently a Justice of the Supreme Court, Sam Spiegel has been a Civil Court Judge and an outstanding Assemblyman. He has served as Assistant Administrative Judge in the Supreme Court and as a Professor of Law at Pace University. He was awarded the Harlan Fiske Stone Memorial Award as outstanding jurist in 1975.

In endorsing his candidacy in the September 1976 Primary, The New York Times said: "He

is one of the most highly regarded Supreme Court Judges in the State, an able administrator and has the ability to perform well in this specialized court."

This candidate came out of a non-political screening panel

**Civil Court Judge
Betty Weinberg Ellerin**



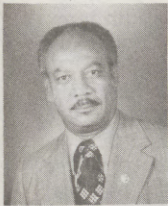
Recommended as "highly qualified" by non-partisan judicial screening panel. 24 years experience in trial and appellate practice, as practicing attorney and member of the court system. Endorsed by N.Y. Women's Bar Association (Past President), N.D.C. and Liberal Party. Given highest rating by N.Y. State Trial Lawyers.

Director, N.Y.U. Law Alumni Association; President, Women's Division, H.I.A.S.; first woman president of Supreme Court Law

Secretaries' and Law Assistants' Association. Concerned with making court system responsive to needs of all litigants.

This candidate came out of a non-political screening panel

Supreme Court Justices



**Fritz W.
Alexander, II**

Appointed to interim term by Governor Carey following approval as "well qualified" by distinguished screening panel. Civil Court Judge for 6 years, appointed to interim term by Mayor Lindsay, elected to full ten-year term in 1970. Acting Family Court Judge, 1974. Acting Justice of the Supreme Court, 1972, and from April, 1975 to September, 1976. Member of Judiciary Relations Committee of the Appellate Division, First Department.

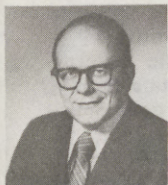
This candidate came out of a non-political screening panel



John Carro

Currently an Acting Supreme Court Justice, Judge Carro served as a Criminal Court Judge from 1969 to 1976. He is a Professor at Lehman College and before that was one at City College. He is a member of the following organizations: Puerto Rican Forum (founding member), ASPIRA (founding member), Puerto Rican Bar Association (Past President).

This candidate came out of a non-political screening panel



Israel Rubin

Judge Rubin, as a Judge of The Civil Court and an Acting Supreme Court Justice, has compiled an outstanding record. His dedication, competence and compassion have been acclaimed by all who have appeared before him. A former Assistant Corporation Counsel in charge of the Penalties Division, he has won landmark cases benefiting all New Yorkers.

This candidate came out of a non-political screening panel



**Richard W.
Wallach**

A Civil Court Judge for seven years, Judge Wallach is now an Acting Supreme Court Justice. He is Chairman of the American Bar Association's National Conference of Special Court Judges, and an associate professor at Fordham Law School. A graduate of Harvard Law School, Judge Wallach has also served on the Ethics Committee of the New York City Bar Association.

This candidate came out of a non-political screening panel



**Ernst H.
Rosenberger**

Ernst Rosenberger has been cited in every *New York Magazine* and *Village Voice* listing of outstanding judges in New York, as well as in Ralph Nader's *Verdicts On Lawyers*. He has been an Acting Justice of the Supreme Court since 1973, a Criminal Court Judge since 1972, and has taught and lectured on law throughout the New York area.

This candidate came out of a non-political screening panel



**U.S. Congress
ED KOCH**

Ed Koch, seeking his fifth term, was voted by his NYC colleagues the "most effective Member." As a result of Ed Koch's leadership, the Federal Privacy Act of 1974 was enacted, his mass transit operating subsidy law provided NYC with \$286 million, and his amendment ended US military aid to the Uruguayan dictatorship. Ed Koch is a public official who has met the highest standards of intellectual and financial honesty.



**State Senate
GEORGE N. SPITZ**

George N. Spitz—Vice-Presidential candidate Walter Mondale says: "With your strong commitment to senior citizens and health care, and your long involvement in the community, you will make a fine representative. Your election is a crucial one in our drive to achieve a Democratic majority in the (New York) State Senate."

A foe of waste in government, George N. Spitz, is author, according to *New York Times*, September 24th, 1971, of a system to "cut \$8 million to \$10 million annually from the cost of issuing (welfare) checks and food stamps . . ."



**State Assembly
PETE GRANNIS**

Pete Grannis is completing his first term in the New York State Assembly where he was one of the few full-time members. He has fought for decent housing and meaningful, comprehensible rent regulations, against increases in income taxes paid by City residents, to reduce air and noise pollution, for more open spaces, and for greater assistance for senior citizens.

LENOX HILL DEMOCRATIC CLUB

1338 First Avenue

YU 2-8870

The Lenox Hill Democratic Club is celebrating its first 20 years of public service and community commitment. We ask you to share our democratic heritage and vote for competent, responsive, compassionate government at all levels by electing the CARTER—MONDALE TICKET.

Martin S. Begun
Lillian F. (Lolly) Gershuny
District Leaders

DEBATE DATES:

HEAR MONDALE
FRIDAY, OCTOBER 15

HEAR CARTER
FRIDAY, OCTOBER 22

VOTE DEMOCRATIC
TUESDAY, NOVEMBER 2nd
6 A.M. — 9 P.M.

Authorized and paid for by committees of candidates
and clubs listed

Printed by Zale S. Koff Graphics, 435 Hudson St., N.Y.C.

