

Office of the Provost & Vice President  
for Academic Affairs

Associate Provost –

Sponsored Programs  
& Research

Assistant Vice President for  
Student Enrollment Services \*

Office of the Dean -  
Weissman School of Arts &  
Sciences

Assistant Vice President for  
Information Technology &  
Chief Information Officer \*

Office of the Vice President  
& Dean - Zicklin School of  
Business

Associate Provost –  
Academic Administration \*

Office of the Dean -  
School of Public Affairs

Associate Provost –  
Teaching/ Learning  
Environment \*

William & Anita  
Newman Library

Black & Hispanic  
Studies

Associate Dean  
(WSAS)

Associate Dean  
(ZSB)

Economics &  
Finance

Academic  
Programs

Public Policy

Steven L. Newman  
Real Estate Institute

English

History

Graduate  
Programs

Law

MS Program in  
Industrial and  
Labor Relations

Public  
Administration

Office of Institutional  
Research and  
Analysis

Fine and  
Performing Arts

Modern  
Languages &  
Comp. Literature

PhD Program

Management

Administrative  
Services

Educational  
Administration &  
Supervision

Mathematics

Natural Sciences

MBA Executive  
Programs

Marketing

National Center  
for the Study of  
Collective  
Bargaining in  
Higher Education  
and the  
Professions

Center for  
Transition &  
Leadership in  
Government

Philosophy

Psychology

Baruch/Mount  
Sinai MBA  
Program - in  
Health Care  
Administration

Stan Ross  
Accountancy

Executive  
Education

Center for  
Educational  
Leadership in  
Public Schools

Political Science

Communication  
Studies

Lawrence N.  
Field Center for  
Entrepreneurship  
& Small Business

Statistics and  
Computer  
Information  
Systems

Center for the  
Study of  
Business and  
Government

Privatization  
Research Org.

Sociology &  
Anthropology

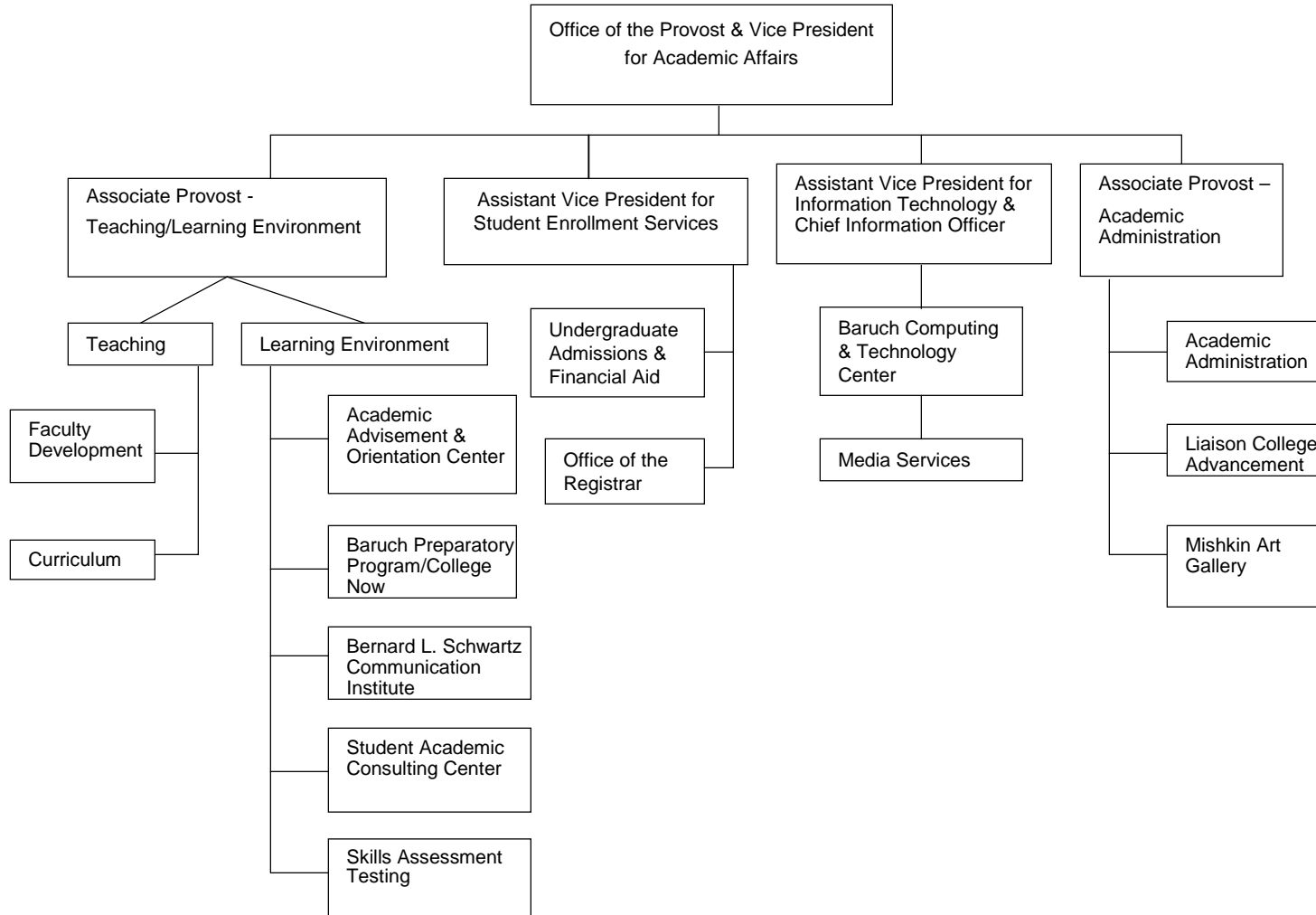
Weissman  
Center for  
International  
Business

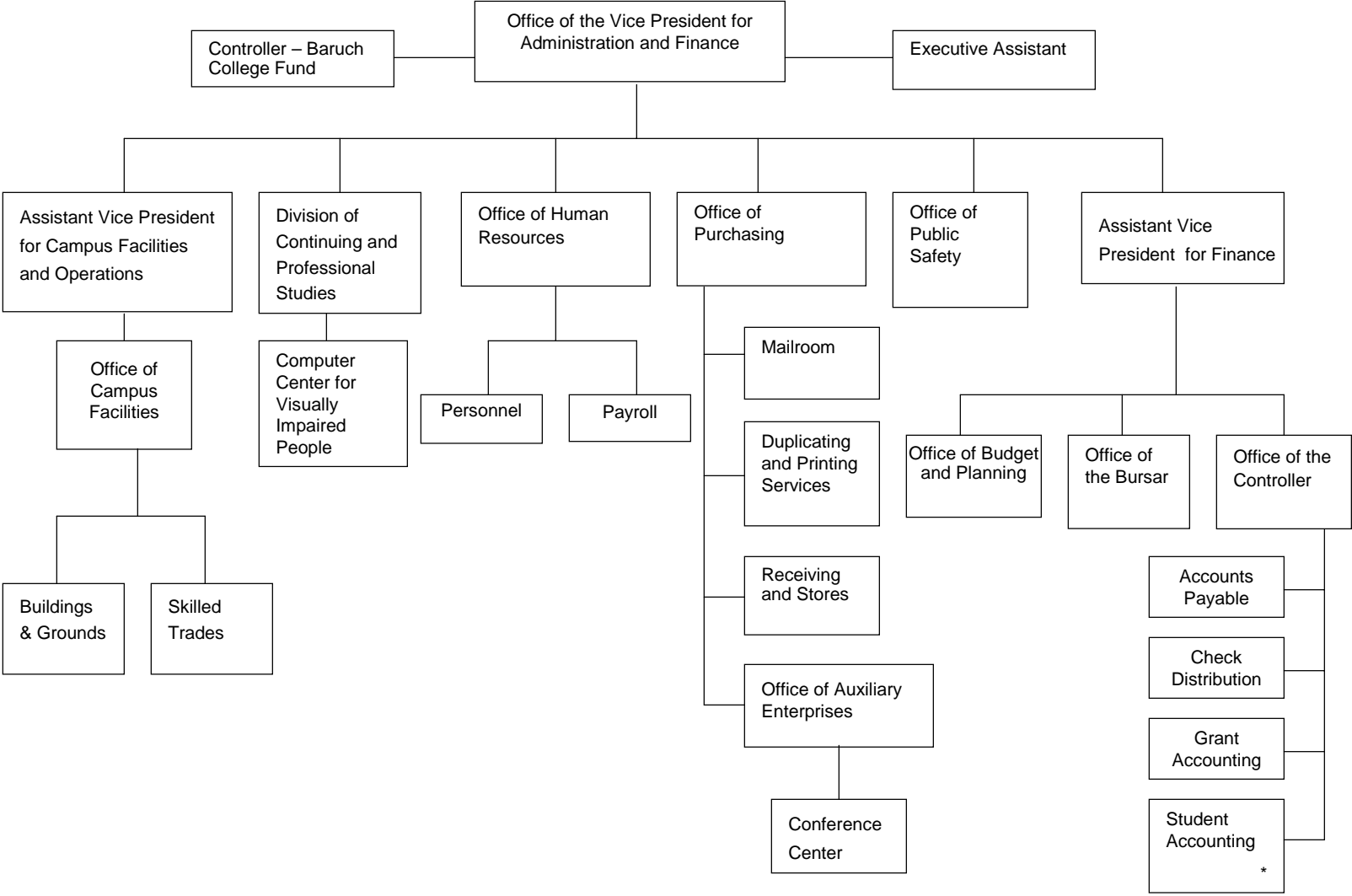
Subotnick  
Financial  
Services  
Center

Health Policy  
Research Org.

Graduate  
Admission &  
Student Services

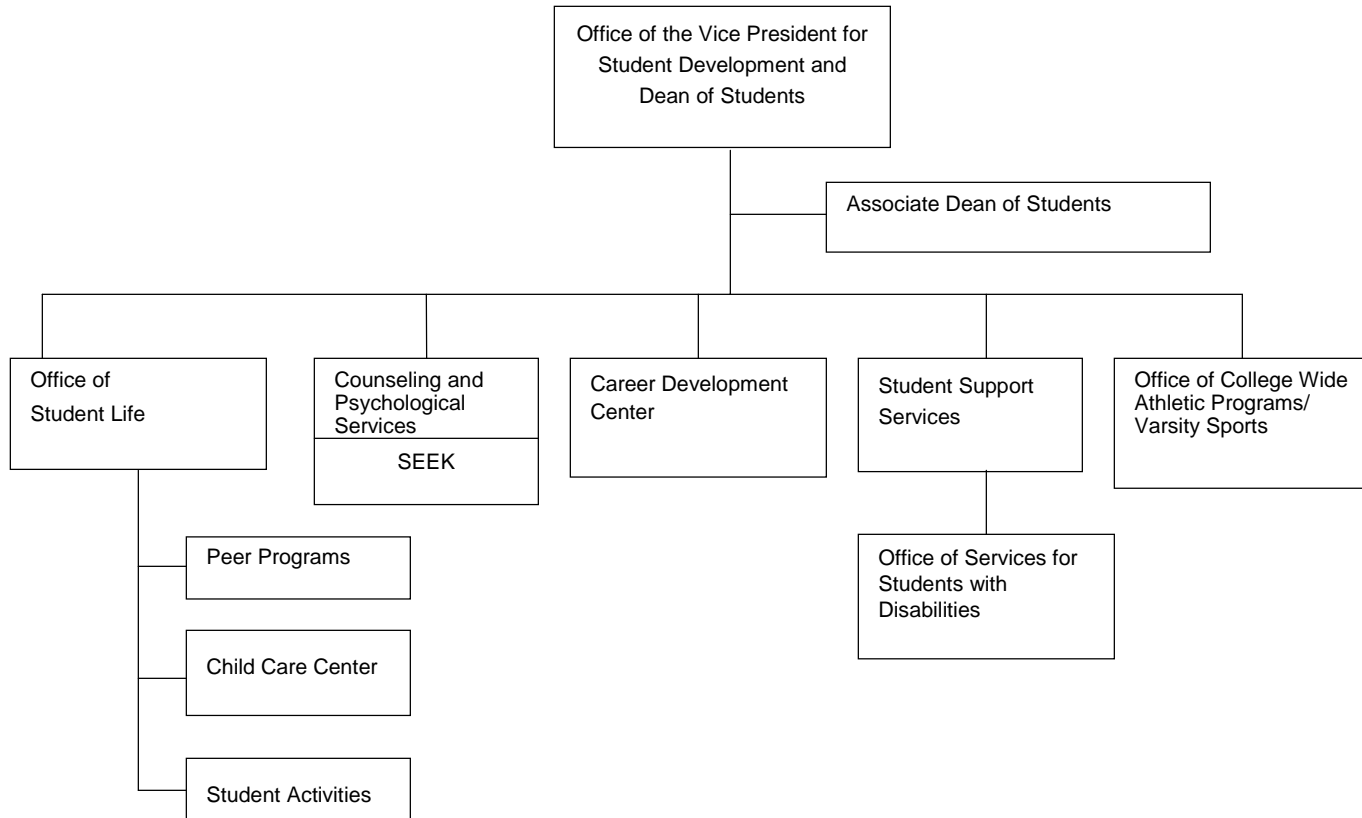
\*See Attached Chart 2A





\*non-tax levy

(Chart 4 of 5)



BARUCH COLLEGE / THE CITY UNIVERSITY OF NEW YORK

(Chart 5 of 5)

