

# Fall 2010 Transfer Orientation

- Welcome
- Goal Setting
- Baruch – An opportunity
- Baruch – Its Resources
- Managing Time and Life – Making It Work
- New School – New Rules
- Making the most out of the learning experience
- Building your Degree Program





Center for Academic Advisement

**Welcome**

**Montage**

# Goal Setting

---

- **Short term Goals**
  - Eligibility for your major
  - High GPA
  - Successful transition

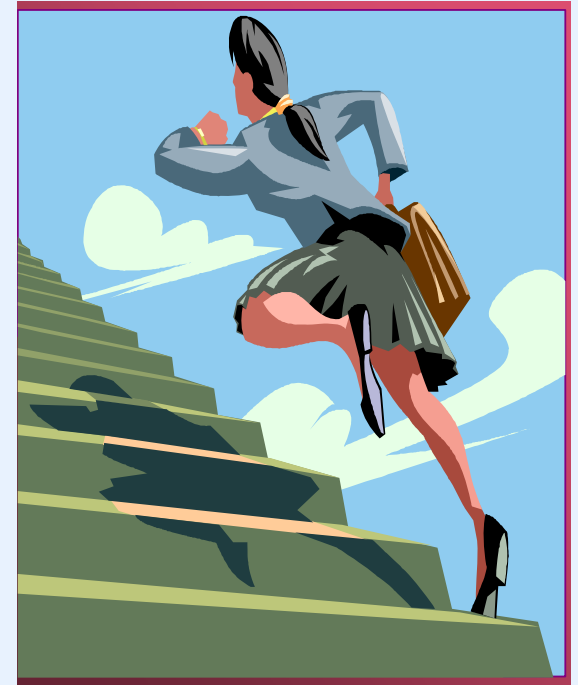
## How to Reach your goals!!

- **Keep track of all grades** in each course. At any point in the semester you should know your grade in each course. Mark in your calendar for the last day to drop a course.
- **Prioritize and organize** your study and personal time into daily and weekly patterns of effectiveness, Maintain regular study hours, Establish study environments to be productive throughout the entire semester.
- **Develop timelines** and keep semester, monthly and weekly calendars for dates when course assignments are due, Plan and prepare for exams and papers in advance.
- **Go to office hours**, Ask questions, Talk with instructors.
- **Review continuously in your courses**, Review and discuss exams and papers with your instructor, Studying for final examinations begins now!
- **Develop a network** of resources, Make a list of phone numbers and email addresses of your faculty, advisors, tutors, and at least one other student from each class.

# Baruch - an Opportunity

---

- The Baruch College & Merrill Lynch Invitational Entrepreneurship Competition
- The Wall Street Careers Program
- The Subotnick Center
- Study Abroad
- Baruch Athletics – Go Bearcats!
- Clubs and organizations
- Student Government
- Greek Life at Baruch on campus. **“ it allows me to be involved in community service and give something back to the organization and the campus community” – Marline Pierre**
- T.E.A.M. (Together Everyone Achieves More) Baruch



# Baruch - It's Resources

---

- **Student Academic Consulting Center (SACC)**
- **Starr Career Development Center (SCDC)**
- **Office of Services for Students with Disabilities (OSSD)**
- **Center for Academic Advisement**
- **Transfer Center**
- **Visit the Health Center**
- **Counseling Center**
- **Study Abroad/Weissman Center for International Business**



# Managing Time & Life

- ❖ How much time does it take to get out of the house in the morning?
- ❖ How much time does it take to get the kids to daycare, breakfast, dry cleaning, etc..?
- ❖ How much time do you spend on MySpace, Facebook, Ebay, or gaming?
- ❖ How much time do you work?
- ❖ **How much time is left for school and studying?**



# *Managing Time & Life - Making it Work*

---

1. **Get -- and use -- a calendar.**
2. **Write down *everything*....**
3. **Schedule time to relax – Why?**
4. **Keep trying new systems.**
5. **Allow for flexibility.**
6. **Plan ahead.**
7. **Plan for the unexpected.**
8. **Schedule rewards in ....**



# New School - New Rules

---

- ✦ Review the specific deadlines, policies, and procedures relating to your academic status, course withdrawal, course repeats, course registration, and the eligibility requirements for your major.

## Here are some important Baruch policies

- **Previous grades do not** transfer to Baruch College. Previous grades are reviewed to determine eligibility for certain majors.
- **Check and Comply with** all course prerequisites and corequisites. Failure to do so may result in being dropped from the course anytime during the semester!
- Courses completed at your previous school (credits received) **may not be repeated** at Baruch.
- **A WU** grade is equivalent to an “F”, Read the Undergraduate Bulletin section titled – Understanding your Final Grades and Transcript.
- Read the Undergraduate Bulletin about **CPI units**.
- **Courses must be dropped by the deadline dates listed in the Schedule of Classes and on the Office of Registrar website.**
- ✦ **Requirements are subject to change. Always stay up-to-date by reading your College Bulletin, Schedule of Classes, your Baruch webmail and other College literature.**

# 3X Repeat Policy

---

- Baruch College has a policy restricting students to a maximum of three registrations for any single course. This means regardless of the grade the student has achieved, including grades of W, WN, WU, WF, FIN, and F.
- Beginning with the Fall 2009 semester, enforcement of the three-time policy will take effect for ALL undergraduate courses throughout the College



# *Making the most out your learning experience*

---

- **Learn** your professors name; office hours and understand all course requirements as outlined in your syllabus.
- **Talk** to your professors- they are experts in their field
- **Go to Class!** - You got to be in it to win it. It is impossible to replace the learning that occurs by attending and participating in class. “Getting the notes” is not the same as attending class



*Building your degree program -  
One semester at a time -  
Fall 2010 Program Planning*

---

- **Review of the Curriculum**
- **Program Planning**
- **Q and A – Ask an Academic Advisor**
- **Registration – On your Own – Need help!  
Orientation student leaders are here to  
assist you!**

# Part 1: Your Undergraduate Degree

**Baruch College offers the following undergraduate degrees**

---

- **BA = Bachelor of Arts = minimum 120 credits**
- **BS = Bachelor of Science = minimum 120 credits**
- **BBA = Bachelor of Business Administration = minimum 124 credits**

**These are the minimum credits required to earn the degree. This number may increase, based on the number and type of credits you transfer to Baruch College. Remember your credits transfer, not your grades.**

**Your degree consists of the:**

- **Common Core Curriculum (Tier I, II and III)**
- **Additional Core Requirements**
- **Major**
- **Electives**

**All Students must submit an :**

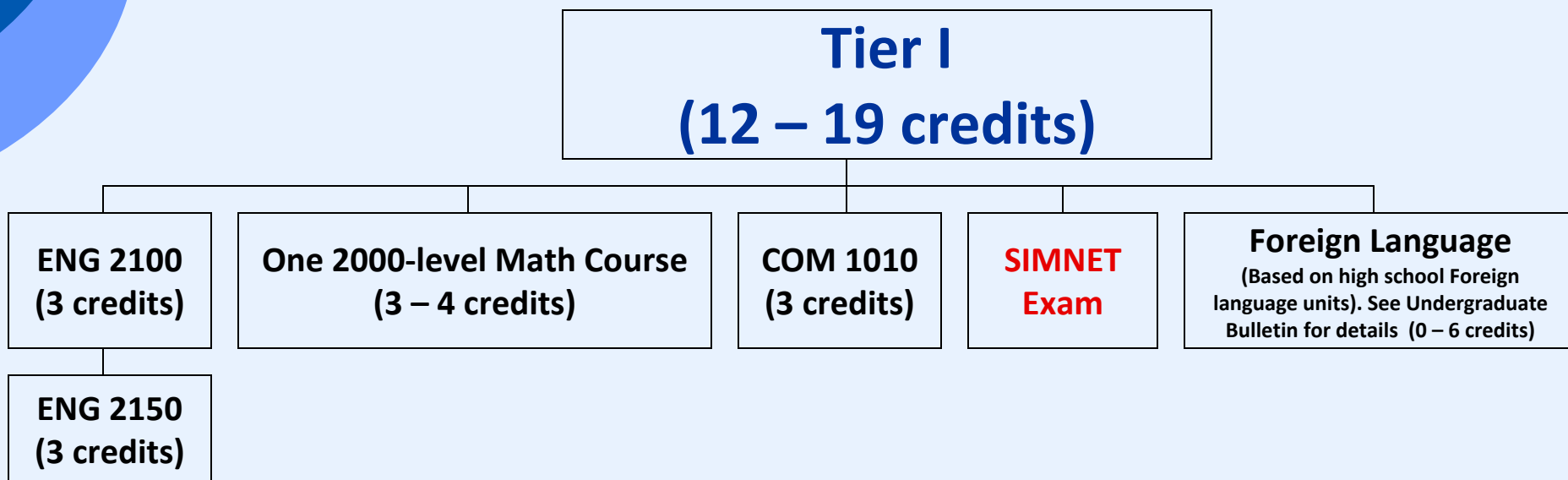
**Eligibility Review for Your Major Application**

**Please go to the following website to learn more!!!**

**[http://www.baruch.cuny.edu/advisement/eligibility\\_review.htm](http://www.baruch.cuny.edu/advisement/eligibility_review.htm)**

# Part 2: Common Core

The Common Core consists of three Tiers with a set number of courses in each tier. As you read each box – mark  $\checkmark$  each of the courses you completed based on what is listed on your evaluation. Highlight the courses that you will need to complete at Baruch to earn your degree. The courses for the core curriculum are required for all majors and degrees.



If you have an Associates degree from a CUNY school (AA, AS, AAS):  
COM 7350 or 7450 waives your COM 1010 requirement.

**NOTE:** MATH 1030 does not fulfill Tier 1 – Math Requirement.

Need the SIMNET Exam? Do not wait until the last minute! Contact - Testing & Evaluation Office at (646) 312 – 4305

# Tier II (29 – 33 credits)

## Humanities (12 credits)

Select one course from  
each of the 4 groups below

ART 1000, 1011, 1012 or  
MSC 1003, 1005 or  
THE 1041

HIS 1000, 1001, 1003,  
1005, 2050 or 2053

ENG 2800, 2850 or  
LTT 2800, 2850

PHI 1500 (2000),  
1600 (2010) or 1700 (2200)

## Natural Sciences (4 credits)

Select one course  
from this group

BIO 1003, 1005, 2010;  
CHM 1000, 2003;  
ENV 1020, 1021  
PHY 1003, 2003

## Social Sciences (13 credits)

Select one course from  
Each of the 4 groups below

PSY 1001

ANT 1001 or SOC 1005

ECO 1001 or ECO 1002  
**\*\*ECO 1110\*\*** (only for  
Liberal Arts majors)

POL 1101, 2001, 2321,  
2332, 2353 or PUB 1250

### If you have an Associates degree from a CUNY school (AA, AS, AAS):

ART 7300, MSC 7200 & FPA 7350 or 7450 waives your ART/ MSC/ THE requirement; HIS 7100, 7350 or 7450 waives your HIS requirement; PHI 7200, 7350 or 7450 waives your PHI requirement; SSC 7350 or 7450 waives your ANT/SOC requirement; POL 7350 or 7450 waives your POL/PUB requirement; PSY 7350 or 7450 waives your PSY requirement and NSC 7350 or 7450 waives your Natural Science requirement.

# Tier III Minor (9 credits)

---

**Tier III consists of selecting three courses in one area of disciplinary study in the Humanities, Natural Sciences, Interdisciplinary Studies or Social Sciences.**

You will need two courses at 3000 level and one (Capstone) course at 4000/5000 level.

**\*\*Your capstone must be completed at Baruch College\*\***

**You must have a grade point average of a “C” (2.0) in your tier three minor to graduate from Baruch College**

You are strongly advised to consult with a faculty advisor, the academic department and the Undergraduate Bulletin for specific courses; appropriate course selection; prerequisites and the sequence of each minor before you register for Tier III courses.




Review the Undergraduate Bulletin for a complete listing of Tier III Minors.

*Note: While you must complete a minor in a non-business discipline, you may also complete a second minor in a business discipline.*

# Part 3: Additional Degree Requirements

**(Degree Requirements Beyond the Common Core Curriculum)**

---

-  Each degree offered at Baruch College has additional course requirements which are described on the following pages.
-  All students in the Weissman School of Arts & Sciences and the School of Public Affairs are required to meet with a faculty advisor to declare their major.
-  All students must submit the on-line “Eligibility Review for your Major”.  
Log on to <http://advisement.baruch.cuny.edu> for more information.

# Additional Degree Requirements

## **(Majors in the Zicklin School of Business – BBA Degree)**

---

- ACC 2101\*
- CALCULUS (MTH 2205, 2006/2206, 2007/2207, 2010/2610) – \*Based on Sequence\*
- CIS 2200\*
- ECO 1002\* (ECO 1001\* required under Tier II - Common Core)
- LAW 1101\*
- STA 2000\*
- ACC 2203 – required for all non- Accountancy majors
- BUS 1000
  
- **Upper Level Courses (Permission from Zicklin School of Business required)**
- FIN 3000
- MGT 3120
- MGT 3121
- MKT 3000
- BPL 5100 – upper senior status required to enroll

***Note: Courses marked with an asterisk\* are also part of the pre-business requirement.  
ZSB will consider your pre-business grades when determining eligibility to ZSB***

# *Additional Degree Requirements*

## (Majors in the Weissman School of Arts and Sciences – BA Degree)

- ⊙ One **additional** Natural Science course (4 credits) from among the following:  
**BIO 1003, 1005, 2010; CHM 1000, 2003; ENV 1020, 1021; PHY 1003, 2003**  
The 2nd Natural Science Course must be in a different area\* from the one taken to fulfill the required Tier II- Natural Science Requirement.  
**\* ENV and BIO are considered to be the same area.**
  
- ⊙ Cultural Studies - Select one course (3 credits) in Black (BLS), Hispanic (HSP), Latin American & Caribbean Studies (LACS) or Asian & Asian American Studies (AAS).
  
- ⊙ Language Or Literature (**the literature must be in the target language**)  
(6 – 8 credits)\*See Undergraduate Bulletin for details\*.

# Additional Degree Requirements

**(Major in the School of Public Affairs – BS Degree)**

---

## Major: Public Affairs

- ECO 1001 (from Common Core)
- PHI 1700 (2200) (from Common Core)
- PUB 1250 (from Common Core) - *Note: Students doing a Public Affairs major should take PUB 1250 not POL 1101 for their Common Core. PUB 1250 is required. However, if student has already taken POL 1101, s/he may be waived from the PUB 1250 requirement.*
- STA 2100 (or STA 2000)
- CIS 2200...remember...all students need the SIMNET too!
- LAW 1101
- **Upper Level Public Affairs (PAF) Courses**  
See Faculty Advisor at the School of Public Affairs

# Part 4. Eligibility Review (Requirements) *for your major*

---

- The next three pages will list the eligibility requirements for the majors offered at Baruch College.

**All students are required to submit the on-line  
“Eligibility Review for your Major” form.**

- You can access this form by logging on to the Center for Advisement and Orientation’s website:  
[www.baruch.cuny.edu/advisement](http://www.baruch.cuny.edu/advisement)

# Eligibility Requirements - Majors in the Zicklin School of Business

Accountancy, Computer Information Systems, Economics, Finance & Investments, Industrial/Organizational Psychology, Human Resource Management, Operations Management, Entrepreneurship Management, Marketing Management, Quantitative Methods & Modeling and Real Estate.

Students who wish to pursue the BBA degree may do so after they have completed a minimum of 45 credits with a minimum overall GPA of 2.25 and an average GPA of 2.25 or higher in the eight pre-business courses. Additionally, students must have completed either COM 1010 or ENG 2150 (or their equivalents) in order to apply. See the eight pre-business courses listed below:

**Note: The Zicklin School of Business will consider your pre-business grades from your previous college when determining eligibility.**

- 1) ACC 2101 Grade = \_\_\_\_
- 2) Calculus Grade = \_\_\_\_
- 3) CIS 2200 Grade = \_\_\_\_
- 4) ECO 1001 Grade = \_\_\_\_
- 5) ECO 1002 Grade = \_\_\_\_
- 6) ENG 2100 Grade = \_\_\_\_
- 7) LAW 1101 Grade = \_\_\_\_
- 8) STA 2000 Grade = \_\_\_\_

Pre-Business course GPA = \_\_\_\_

Overall GPA = \_\_\_\_



To find out more information, log on to:

<http://zicklin.baruch.cuny.edu/programs/undergrad/entrance.html>

# Eligibility Requirements - Majors in the Weissman School of Arts

---

*At the Weissman School of Arts and Sciences, we take full advantage of the bottomless reservoir of artistic, performing, and intellectual talent available in our backyard to provide all Baruch undergraduates a broad-based education in arts and culture and the sciences. Our small classes and dedicated faculty create a nurturing environment for individual learning and intellectual growth. And with courses in more than 40 areas of study, students have the opportunity to build a variety of majors and minors, as well as their own programs.*

**Requirement: Minimum overall GPA of 2.0**

**Please note the following important information!**

Students who wish to complete the BA degree **must declare their major through one of the Academic Departments in the Weissman School of Arts & Sciences and meet with a faculty advisor.**

- The School offers an Ad Hoc Arts & Sciences major and grants students the opportunity of completing a double major in Arts & Sciences.
- Review the Undergraduate Bulletin for majors offered by the Weissman School.
- Check out the website for more information about the Weissman School - <http://www.baruch.cuny.edu/wsas/>



**To find out more information, log on to: [www.baruch.cuny.edu/advisement](http://www.baruch.cuny.edu/advisement)**

# Eligibility Requirements - Major in the School of Public Affairs

*The Bachelor of Science in Public Affairs (BSPA) is a unique and exciting program in policy, nonprofit and government. The program offers a set of five core courses that focus on New York City as a laboratory, qualitative and quantitative methods, economic analysis and public communication. These courses prepare the student to participate in analysis and decision-making in the public, nonprofit or private sectors. Skills such as analyzing data, organizing people, developing and evaluating plans, speaking in public to groups and negotiating and budgeting are learned in this major.*

**As of April 2007**, the Bachelor of Science in Public Affairs has two sets of criteria for admission into the program.

Completion of the following 9 courses with a gpa of at least 2.5: PUB 1250, ENG 2100, ENG 2150, STA 2100 (or STA 2000), **any** 2000-level math course, ECO 1001, COM 1010, CIS 2200 and POL 2332.

Completion of any 48 credits hours that include PUB 1250, ENG 2100, ENG 2150, STA 2100 (or STA 2000), and **any** 2000-level math course, and an overall gpa of 2.25.

**NOTE:** ECO 1002 and LAW 1101 are **NOT** required for admission into the BSPA. Students should take PUB 1250, NOT POL 1101 for their common core. PUB 1250 is required. However, if students have already taken POL 1101, they may be waived from the PUB 1250 requirement.

Once these requirements have been met, students should fill out the online [Eligibility Review for Your Major](#) form. Once they have been approved for the major, they may declare their major officially (086) and begin taking major courses.

**-CONTACT-**

**Ms. Jennifer Harrington in the  
School of Public Affairs**

You can also refer to the School of Public Affairs website:

<http://www.baruch.cuny.edu/spa/Academics/BachelorofScienceinPublicAffairs.jsp>

# Enjoy the Baruch Experience!

---

## Your Advisement Staff

- Sharon D. Ricks, Director [Sharon.Ricks@baruch.cuny.edu](mailto:Sharon.Ricks@baruch.cuny.edu)
- Dionne Brown, Peer Advisor Coordinator [Dionne.Brown@baruch.cuny.edu](mailto:Dionne.Brown@baruch.cuny.edu)
- Elaine Cataletto, Senior Academic Advisor [Elaine.Cataletto@baruch.cuny.edu](mailto:Elaine.Cataletto@baruch.cuny.edu)
- Krista Dejoseph, Transfer Student Specialist [Krista.Dejoseph@baruch.cuny.edu](mailto:Krista.Dejoseph@baruch.cuny.edu)
- Phillip Hogue, Senior Academic Advisor [Phillip.Hogue@baruch.cuny.edu](mailto:Phillip.Hogue@baruch.cuny.edu)
- Adam Joncich, Transfer Student Specialist [Adam.Joncich@baruch.cuny.edu](mailto:Adam.Joncich@baruch.cuny.edu)
- Lirie (Lily) Kurtaj, Student Athlete Advisor [Lirie.Kurtaj@baruch.cuny.edu](mailto:Lirie.Kurtaj@baruch.cuny.edu)
- Marvin Rodriguez, E-Advisement Coordinator [Marvin.Rodriguez@baruch.cuny.edu](mailto:Marvin.Rodriguez@baruch.cuny.edu)
- Vilmarie Rosario, Joint CAS Coordinator [Vilmarie.Rosario@baruch.cuny.edu](mailto:Vilmarie.Rosario@baruch.cuny.edu)
- Christy Seto, Student Athlete Advisor [Christy.Seto@baruch.cuny.edu](mailto:Christy.Seto@baruch.cuny.edu)
- Sarah Wagner, Registrar Liaison [Sarah.Wagner@baruch.cuny.edu](mailto:Sarah.Wagner@baruch.cuny.edu)
- Lancia Yan, Newsletter Editor [Lancia.Yan@baruch.cuny.edu](mailto:Lancia.Yan@baruch.cuny.edu)